

CAN INTERFACE UNIT

CIU-3 THREE CHANNEL



The CIU-3 three channel CAN interface unit is used to translate the voltage output from up to three sensors and transmit over CAN to the host controller and/or logger.

Electrical

- Supply voltage 8 to 16V unregulated
- This supply is also the unregulated sensor supply
- Regulated sensor supply: $5V \pm 10mV$, 50mA max total
- Supply current (without sensors connected) 105mA max (90mA typ at 13.8V)
- Reverse polarity protection

Inputs

- Sensor inputs 0-5V. The output will read 5V for any input 5V or higher

Communications

- 1Mbit/s CAN communications link for configuration and results data
- CAN sampling rate configured by host ECU up to 1kHz
- CAN message identifiers configured by host ECU allowing multiple modules sharing a common bus (a fixed CAN identifier will be required for configuration messages)
- CAN bus link must be terminated using 120ohm resistor

Mechanical

- Weight less than 80g
- Aluminium body hard anodised and dyed black

Environmental

- Resistant to standard motorsport fluids
- Lid sealed with silicon o-ring
- Operating temperature 0 to +115°C
- Storage temperature -10 to +125°C
- Vibration 100 to 1000Hz, all axis, 24hours

Application

- Interface to remote sensors

Connection Definition

Lemo connector variant O 030 200 010 001

- 3x Interface inputs 4 way Lemo ECN.FF.304.SLM, blue, green and black nut

Pin 1	Sensor supply (unregulated)
Pin 2	Signal
Pin 3	Ground
Pin 4	Sensor supply (regulated)

- Interface output 4 way Lemo ECS.FF.304.SLC, red nut

Pin 1	Supply
Pin 2	CAN +
Pin 3	CAN -
Pin 4	Ground

Souriau connector variant O 030 200 010 002

- 3x Interface inputs 8STA0-02-05SA Connectors B, C and D

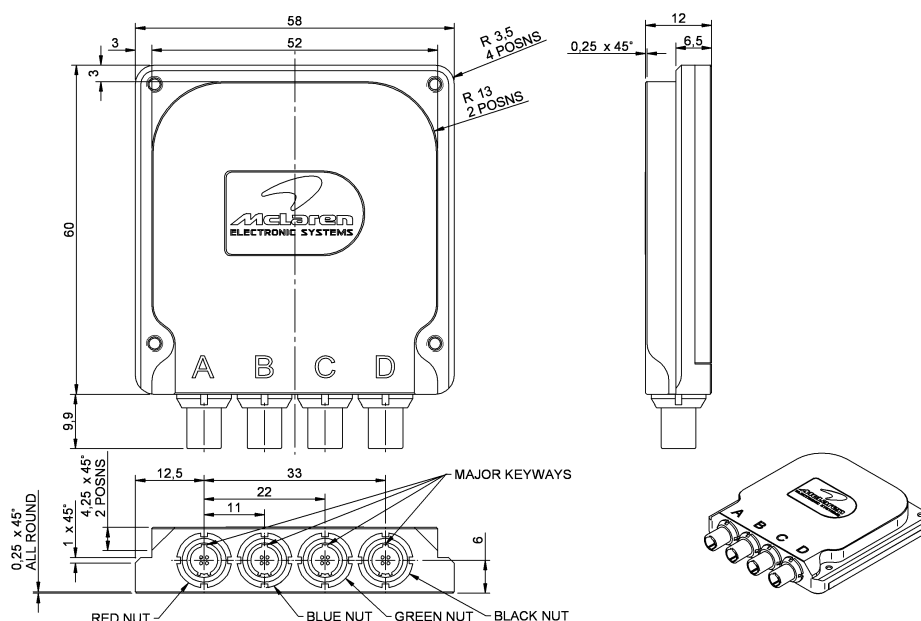
Pin 1	Sensor supply (unregulated)
Pin 2	Signal
Pin 3	Ground
Pin 4	Sensor supply (regulated)
Pin 5	N/C

- Interface output 8STA0-02-05PN Connector A

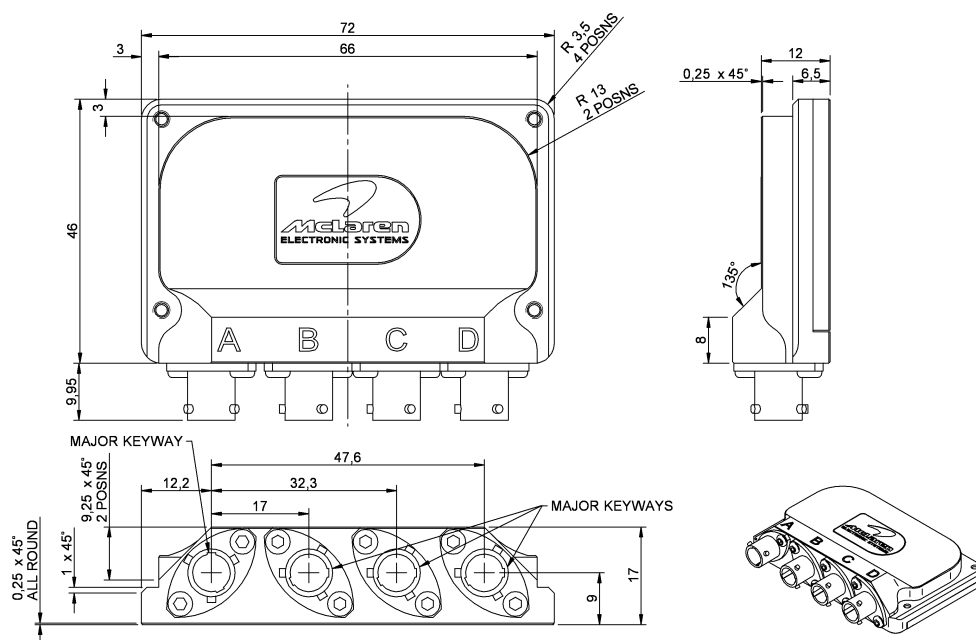
Pin 1	Supply
Pin 2	CAN +
Pin 3	CAN -
Pin 4	Ground
Pin 5	N/C

CAN INTERFACE UNIT

CIU-3 THREE CHANNEL



Description	Order Code
Three channel CAN Interface unit with Lemo connectors	O 030 200 010 001



Description	Order Code
Three channel CAN Interface unit with Souriau connectors	O 030 200 010 002